

Digital Voice Recorder

User's Manual

Content

Function overview.....	
Precaution.....	
Appearance and buttons.....	
Operations.....	
Turn on/off.....	
Record and stop recording.....	
Record telephone conversations.....	
Record through external Microphone:.....	
Record audio via line-in.....	
Recording monitor and hearing aid function.....	
Play recording files.....	
Time setting.....	
Music.....	
A-B marker repeat.....	
Delete.....	
FM radio (Selectable).....	
Connect with PC via USB.....	
Recharge the battery.....	
Installation of drive.....	
Convert ACT files to WAV files.....	
Trouble shooting.....	
Technical Specifications.....	

Function Overview

- One-key recording.
- Three recording modes.
 - LP is long-time recording, ACT format
 - SP is good quality recording & Voice Activated recording, WAV format.
 - HP is high-Quality recording, MP3 format
- Recording monitor and hearing aid function.
- USB plug & play, no need USB cable.
- Record telephone conversations.
- Record via external microphone.
- Automatic recording-section-break function.
- Recording time setting function.
- Work as Music player.
- Low-battery indication.
- Built-in speaker.
- Work as USB flash disk.
- FM radio (Selectable)
- A-B marker repeat function.
- Built-in lithium battery.

Precautions

- Please turn off the recorder and push the power switch to “OFF” side if do not use the recorder for a long time.
- Please recharge the battery properly when the low-battery indication shows on the screen.
- Please read the instruction manual carefully before using. Please keep it away from moisture and high temperature, and don't put it near the fire.
- Please avoid strong vibration or shocks when using the recorder. Do not press the screen forcefully. Otherwise it may cause damage of the LCD screen and improper work of the screen display.
- If there's any quality problem with the recorder, please contact with our company or your local distributor. Please don't disassemble or replace the internal parts yourself.
- Please backup the files before sending the recorder for repair. We are not responsible for the lost of files which caused by repair and other reasons. .
- We are not responsible for the users' recording without others' approval.
- We reserve the right to modify the design and specifications. We have no responsibility to give separate notice for the modification.

Appearance and buttons



- (1) Play/stop playing (▶||)
- (2) Menu/Delete (M)
- (3) Forward (▶▶)
- (4) Backward (◀◀)
- (5) Record (REC)
- (6) Volume (+)
- (7) Volume (-)
- (8) Power Switch (OFF/ON)
- (9) Earphone (🎧)
- (10) Signal-in (◀)
- (11) Screen
- (12) USB plug
- (13) indicator light
- (14) Built-in Microphone

Operation

◆ Turn on/off the recorder

● Turn on the recorder:

If the power switch is at OFF side. Push the power switch (OFF/ON) to “ON” side. The screen will lighten in 5 seconds, the recorder is turned on.

Long-time press ►|| button when the recorder is off, the recorder is turned on. The screen shows:



If there are SP and LP recording files, the recorder will enter into standby Playing mode for recording files. The screen shows:

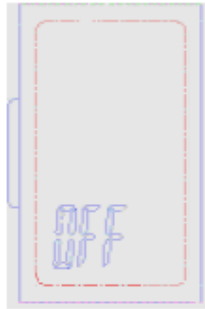


If there is no SP or LP recording in the recorder. The screen shows:




● Turn off the recorder:


Long-time press ►|| button at standby condition, the screen shows OFF (as the following picture). The recorder is turned off.



● **Low battery indication:**


The symbol  will twinkle on the screen if the battery is low. The recorder will be turned off automatically in about 30 seconds. If the recording is proceeding while the recorder is turned off due to low battery, the recording will be saved automatically in the recorder. Please recharge the battery accordingly.

● **One-key Record /stop recording**

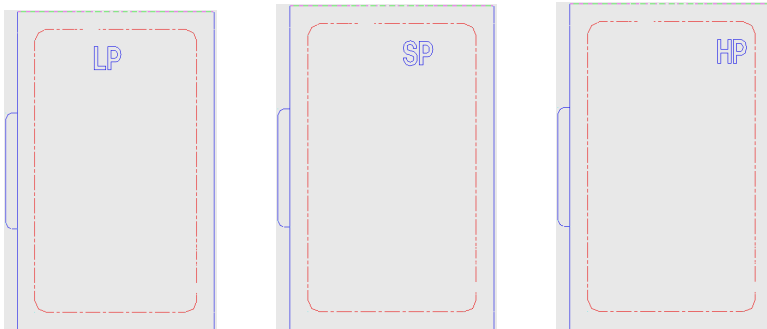
Press “REC” button at standby condition to start recording. Screen shows , the recorder enters in SP recording mode. The indicator light is twinkling. It begins recording. Repress “REC” button to stop recording.

Remarks: SP recording mode is the defaulted recording mode in the recorder. And it is also defaulted as Voice Activated Recording.

● **Setting recording mode**

Setting recording mode: Press “Menu” button to enter in main menu. Press  button to select the recording modes. Press “M” button to confirm the selection.

Following are the screens of recording modes: (the sign of recording mode twinkles on the screen when we come to different modes)



LP: Long-time recording, ACT format

SP: Good quality with Voice Activated recording, WAV format

HP: High quality recording, MP3 format.

SP recording mode is defaulted as Voice Activated recording. The VAR sensitivity can be adjusted according to the environment.

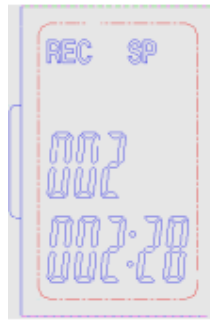
● **Adjusting the sensitivity of VAR:** After entering the SP recording mode. Press the “REC”

button to record, re-press “REC” button to stop recording, then press **⏮** or **⏭** to select the levels of VAR according to your needs, minimum is 0 and the maximum is 4. Re-press the “REC” to restart recording after finishing adjustment. The defaulted VOR sensitivity level is “0”.

VOS will twinkle when there’s no sound input. The recording time stop stamping. The recording pauses. It will automatically start recording when there’s sound input. Screen shows:



(Pause recording)

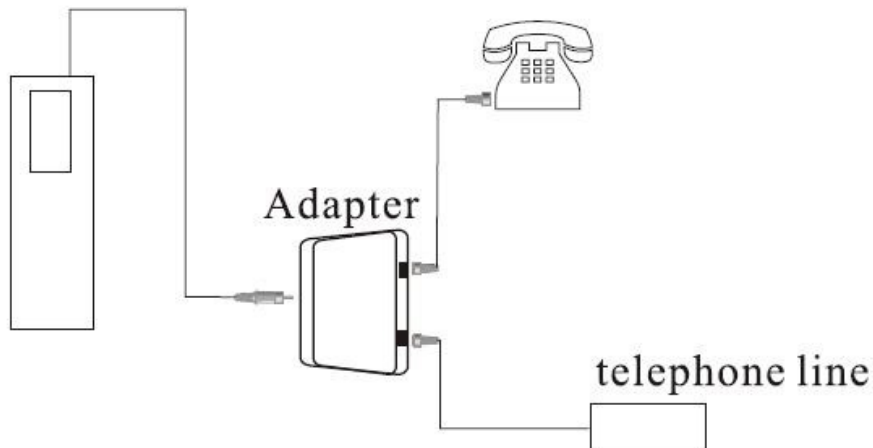



(recording)

! Attention: When screen shows “FUL”, it indicates the disk is full or the battery is low. Then some files should be deleted to keep enough space to save new recording files & other PC files. The recorder can save 200 pieces of recording files.

! Attention: Please don't switch off the power when recording is proceeding. It will cause the loss of the recording messages or the frozen problem. If this problem occurred, please format the recorder on the computer with FAT system. After formatting, the recorder can work properly. We are not responsible for the loss of recording message caused by fault use.

● **Record telephone conversations**




- Step 1.** Insert the telephone line and phone connecting line in the telephone adaptor.
- Step 2.** Insert one end of the line-in cable into the telephone adaptor, the other end insert to the  jack.
- Step 3.** Select the suitable recording mode in the recorder. Press “REC” button to start recording.

● **Record through external Microphone:**

- Step 1.** Insert the external Microphone in the  Jack.
- Step 2.** Turn on the recorder. Press “REC” button to start recording.

● **Record audio via Line-in:**

- Step 1.** Connect one end of line-in cable with the audio output of external player and the other end with  jack of the recorder.
- Step 2.** To select the recording mode first, after that press “REC” button to start recording, then turn on the external player and play the audio files, the sound it plays will be recorded.

● **Recording monitor and hearing aid function**

Recording monitor function: Listening with earphone when the recording is proceeding, you can hear what you are recording and various effects of recording in different conditions.

- **Hearing aid function:** For the person whose hearing is not so good, the monitor volume can be adjusted for hearing aid.
- **Adjusting the monitor volume:** Press the “REC” to stop the recording and then press the VOLUME+ or VOLUME - to select the volume according to your need, the minimum is 0 and the maximum is 31. After finishing the adjustment, press “REC” to start recording.

Remarks: HP recording mode does not have hearing aid function.

- **Automatic section-break:** After recording for full 4 hours, it will automatically start a new file to continue recording.

◆ **Play Recordings**


● **Play LP & SP recordings.**

Press **⏮** or **⏭** button in the main menu to select the recording file menu “VOS”. Press “M” button to enter into the recording file menu. Press **▶** to play the recordings. Re-press **▶** to pause / stop playing.

Press **▶** after stop recording to play the present recordings. Re-press **▶** to pause / stop recording.

● **Play HP recordings.**

Remarks: The HP recordings are in music file. The recording files are with “HP” show on the screen.

Press **⏮** or **⏭** button in the main menu to select the music file menu . Press “M” button to enter into the sub-menu. Press **⏮** or **⏭** button to select the HP recordings. Press **▶** to play. Re-press **▶** to pause / stop recording.

● **Adjust volume:**

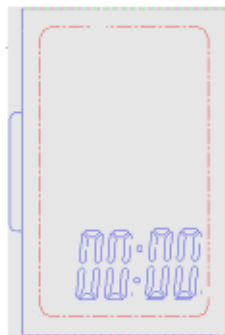
Press “volume+/volume-” button to adjust the volume.

● **Select the recording to play:**

Press **▶** button for next recording when recording is playing. Press **⏮** button for last. Long-time press **⏮** or **⏭** for fast forward or backward.

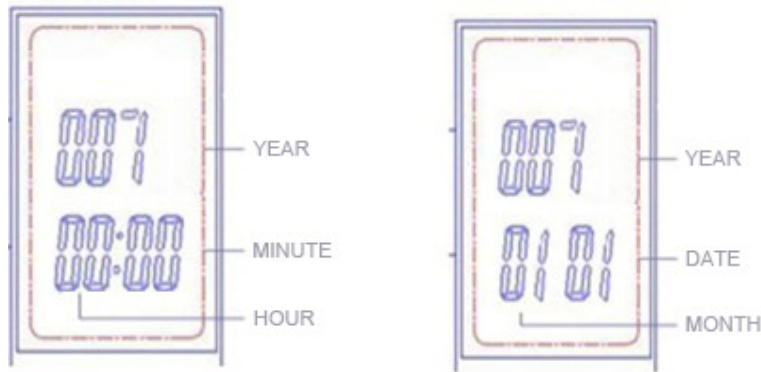
◆ **Record-time setting**

Press **⏮** or **⏭** button at standby mode to select the time-setting mode:



Press “M” button to enter in. Press **⏮** or **⏭** button to select the part which should be adjusted. The selected part will twinkle. Press “VOL+/VOL-” button to adjust the

part.



After finishing setting the time, the recorder will automatically confirm the setting. The recorder will come back to main menu in 10 seconds or press “M” button to enter into main menu.

● **Check the recording time**

Please upload the recording files which need to be checked the recording time to the computer. Right click the mouse and open “Properties”. You can check the time data of the recording file:

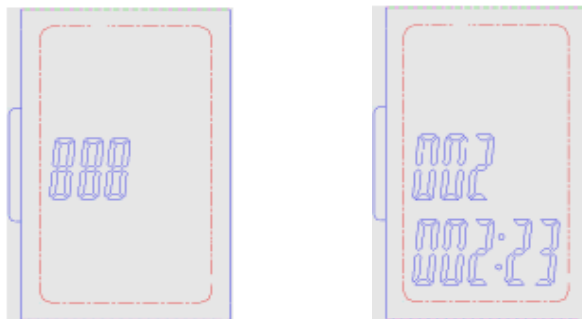
- (1) The creation time is the time when recording started.
- (2) The modified time is the time when recording stopped
- (3) The access time is the time when the recording files uploaded to the computer.

Remarks: Since there’s no clock function in the recorder, the time which is indicated would be a little different with daily time, please reset the time when you need this function.

◆ **Music**

● **Enter into music mode**

Press **⏮** or **⏭** button at standby mode to select the Music mode, as picture 1. Press “M” button to enter into the music standby mode as picture 2.



(1)

(2)

Remarks: If there’s no music or HP recording in the recorder. The recorder will back to main menu after press “M” button.

● **Play and stop playing music:**

Press **▶▶** button to start playing after enter into music mode. Repress **▶▶** button to stop playing.

● **Adjust volume:**

Press “volume+/volume-” button to adjust the volume.

● **Select the music to play:**

Press **▶▶** button for next recording when recording is playing. Press **◀◀** button for last. Long-time press **◀◀** or **▶▶** for fast forward or backward.

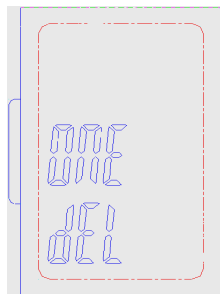
◆ **A—B repeat**

Select A—B : Press “REC” button when playing to confirm point “A”, repress “REC” button to confirm point “B”. The recorder starts to repeat from A to B.

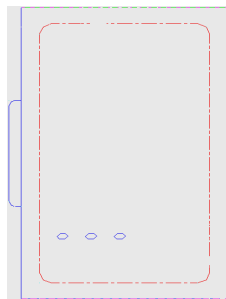
Stop repeating: The recorder will automatically stop repeating after repeating for 3 times when repeating music. And it will repeat all the time when repeating recording files. Press “REC” button or press “M” button to stop repeating.

◆ **Delete**

In the recording and playing ceasing condition, select the file which should be deleted. Long time press “M” button about 3 seconds to delete the one you selected. The screen shows like below: picture (1).



Repress “M” button to confirm the deletion:



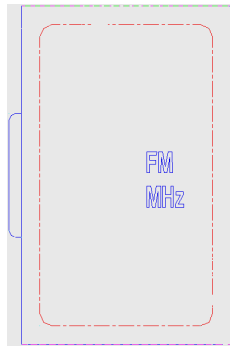
Attention: After entering in the “Delete” condition, no further operations on the recorder within 3 seconds, the recorder will automatically exit delete mode.

Attention: Please backup the important files in the computer before deleting or formatting the recorder.

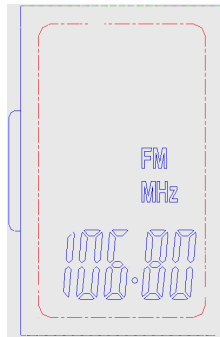
◆ **FM radio:**

● **Enter into FM radio mode:**

Press **⏪** or **⏩** button at standby mode to select the FM radio mode, as picture 1.
Press “M” button to enter into FM radio, as picture 2.

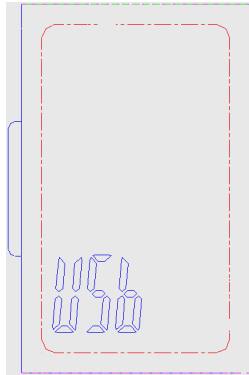


(1)



(2)

- **Scan Channel:** Short time press **⏪** or **⏩** button for manual scanning. Long time press **⏪** or **⏩** button for automatic scanning. If the channel is scanned, the recorder will stop to playback the channel automatically.
- **Save the scanned channel:** Short time press “REC” button to save the channel when recorder scanned the channel. After saving the channel, press **▶||** button to play the saved channels. E. g. Press **▶||** button once, it will play the first channel “P01”. Repress for next channel “P02”. And others on the analogy of this
- **Delete the saved channels:** Long time press “M” button for about 3 seconds, then repress “M” button to confirm the deletion of all saved channels.
Remark: Please use earphone which accompanying with the recorder when listening to FM radio (earphone used as an aerial).
- ◆ **Connect with the computer**
Please insert the USB plug into USB port of computer, the screen of recorder shows below interface:



The recorder can be used as a USB flash disk. It can easily transfer recordings to the computer and PC files to recorder. It is support Windows98/Me/2K/XP/Vista. The driver should be installed if the computer is Windows98 or below.

The recorder can be USB power supplied. Press “M” button when connecting with the computer, the recorder disconnect USB interface, it comes to main menu or recording file mode, it can be operated as usual. But the speaker can not work when the recorder works at USB power supply. Please use earphone for listening.

Remarks: Please do not disconnect the recorder with computer while it is transferring data with computer. Otherwise the data in the recorder will be lost or cause frozen problem of recorder. If above problem occurred, please format the recorder under “FAT” system.

◆ Recharge the battery

Please insert the USB plug into the recharger. Insert the charger into the AC plug (110V-250V). The recorder’s indicator light lightens, the recharger’s red and green indicator lightens indicates power recharge is proceeding. After the recharge is over. The recorder’s indicator light will off, the recharger’s red indicator light will off also. And “FUL” will display on the screen of recorder:



Please use up the power before the first recharge. Please recharge the battery for more than 6 hours to prolong the battery life at the first recharge.

The recorder can be recharged via computer USB. The indicator light of the recorder is lightened during recharge, indicator light off when recharge over. And the recorder displays “FUL” on the screen.

◆ Install driver to computer

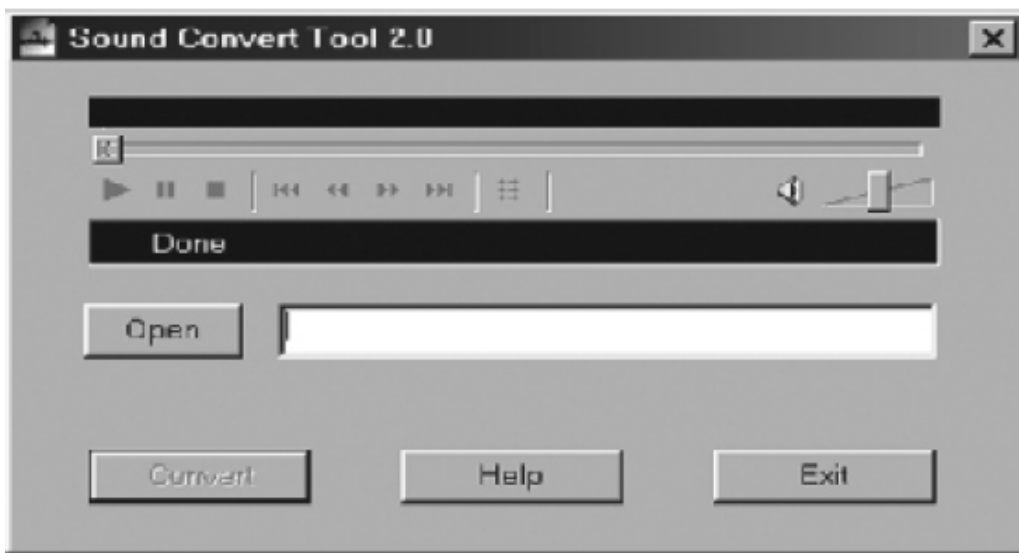
Place the accompanying CD into the CD ROM of PC (or manually operate the “set up. exe”

in the CD), enter in installation interface, click “Next” button, click “Next” button after selecting installation path. Click “Next” to start installing the program. After successful installation, click “Close” button to fulfill software installation. To start from PC’s “Start” → “Program” → “MP3 Player Upgrade, Sound Convert”. MP3 Player Upgrade is an upgrade tool. Sound Convert is for converting the ACT file to WAV file. MP3 player Disk Tool is for setting the password for the disk.

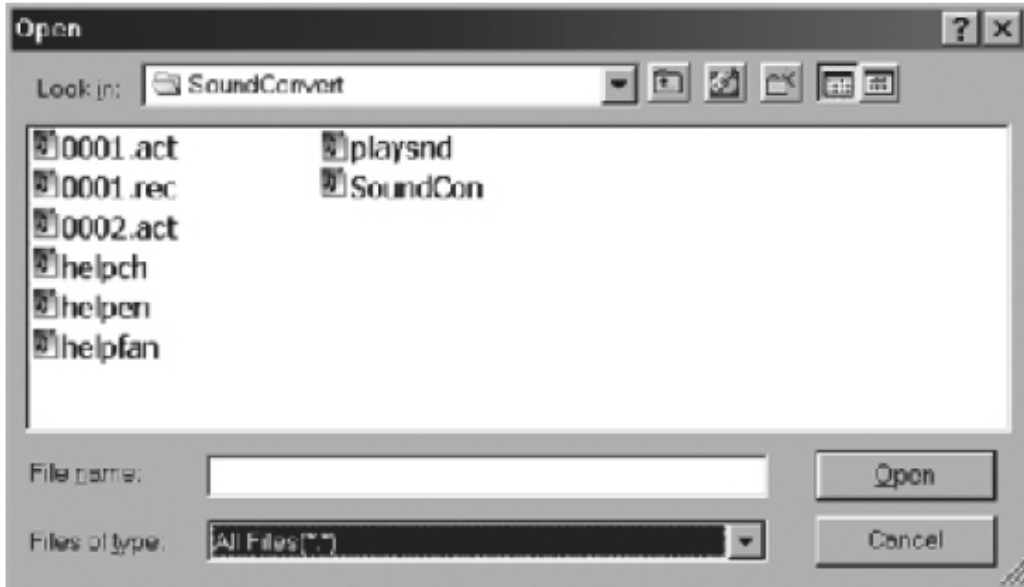
◆ **Convert ACT recording file into WAV format**

The ACT format file recorded by the recorder can be converted into WAV format via the software in the driver.

1. Run “Sound Converter” program, and click “Open” button



2. Select ACT file to be converted



3. Click “Convert” button to start converting into WAV file



4. Beside the function that convert ACT format into WAV format, this software also can play the files in WAV and MP3 format.



Attention: Before converting the ACT file, please rename or backup the recording file

in WAV format which has the same code with ACT format need to convert.

For example: We want to convert “REC001 ACT” to WAV format. Before converting it, we have to rename the “REC001”. Otherwise the new file “REC001” created by converting will replace the original “REC001”.

Trouble shooting

- The recorder can not turn on.
Please check whether the power switch is at “ON” side or whether there’s enough power or not.
- No sound can be heard when playing files.
Please make sure the connection of earphone is OK. Please adjust the volume or check the file to see whether the file has been damaged.
- It can not record sometimes.
Please format the recorder at FAT system. But please backup the important files before formatting.
- The recorder is frozen, can not response.
Format the recorder at FAT system. But please backup the important files before formatting.
- Can not connect with PC
Please check whether the driver was installed properly. Please check whether the recorder and the PC were connected in the right way.

Technical specifications

Size: 96mm*30mm*13mm	Weight: 34g
Power: lithium battery 3.7V 180mAh	
Flash memory: FLASH 128MB to 2GB	
Sampling rate: LP 8Kbps/SP 32Kbps/HP 128Kbps	
Recording time	128MB:LP 35 hours/SP 8 hours/ HP 2 hours
	256MB:LP 70 hours/SP 17 hours/HP 4 hours
	512MB:LP 140 hours/SP 35 hours/HP 9 hours
	1GB: LP 280 hours/SP 70 hours/HP 17 hours

	2GB: LP 560 hours/SP 140 hours/HP 34 hours
FM radio(Selectable): 87.0~108MHz	
Frequency response 20Hz~20KHz	
MP3 signal rate 80db	
Maximum output: 10mw(L)+10mw(R)	
Support system Windows98/Me/2K/XP/Vista	
Music format MP3 WMA	
Recording format MP3 WAV ACT	