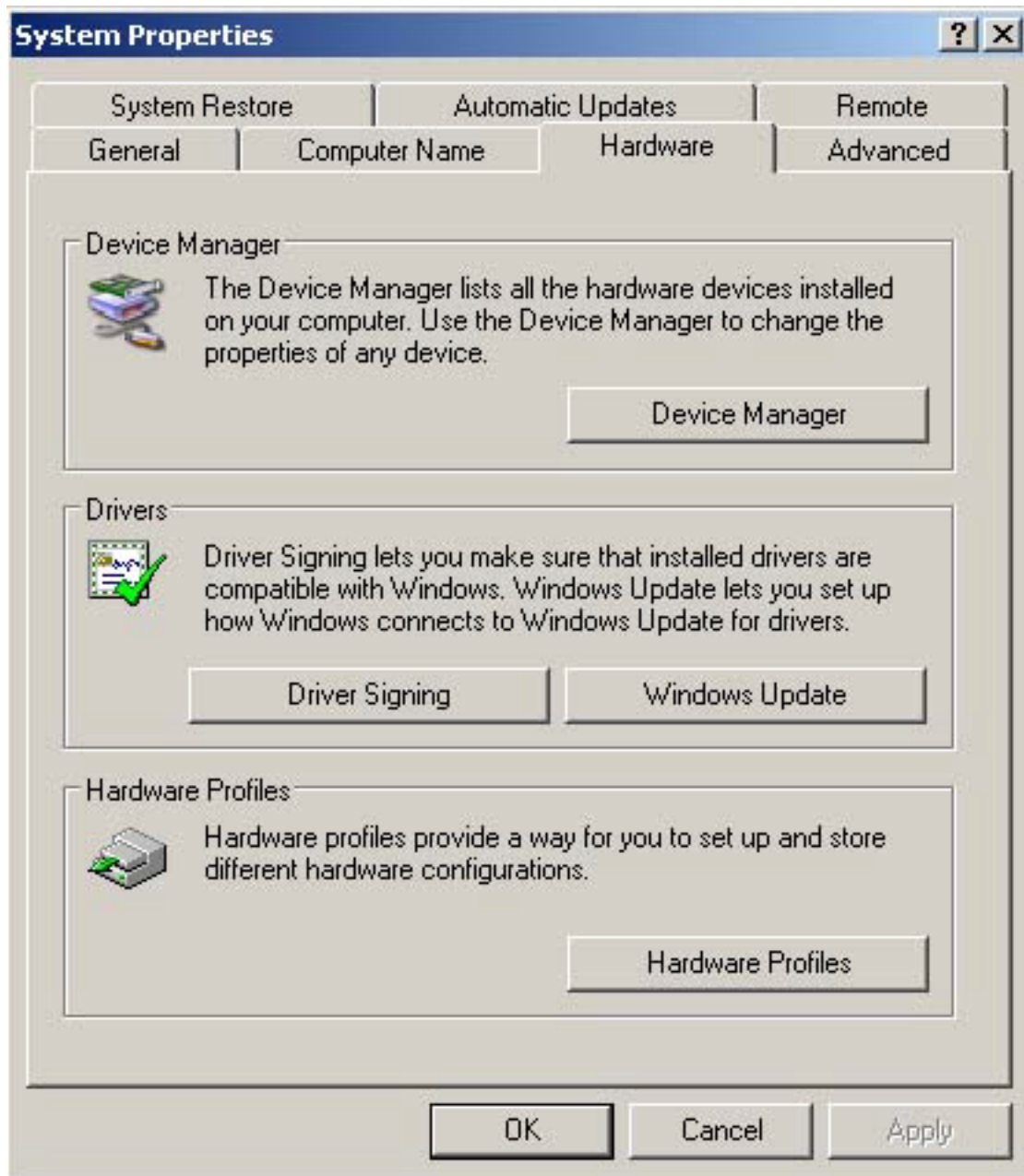
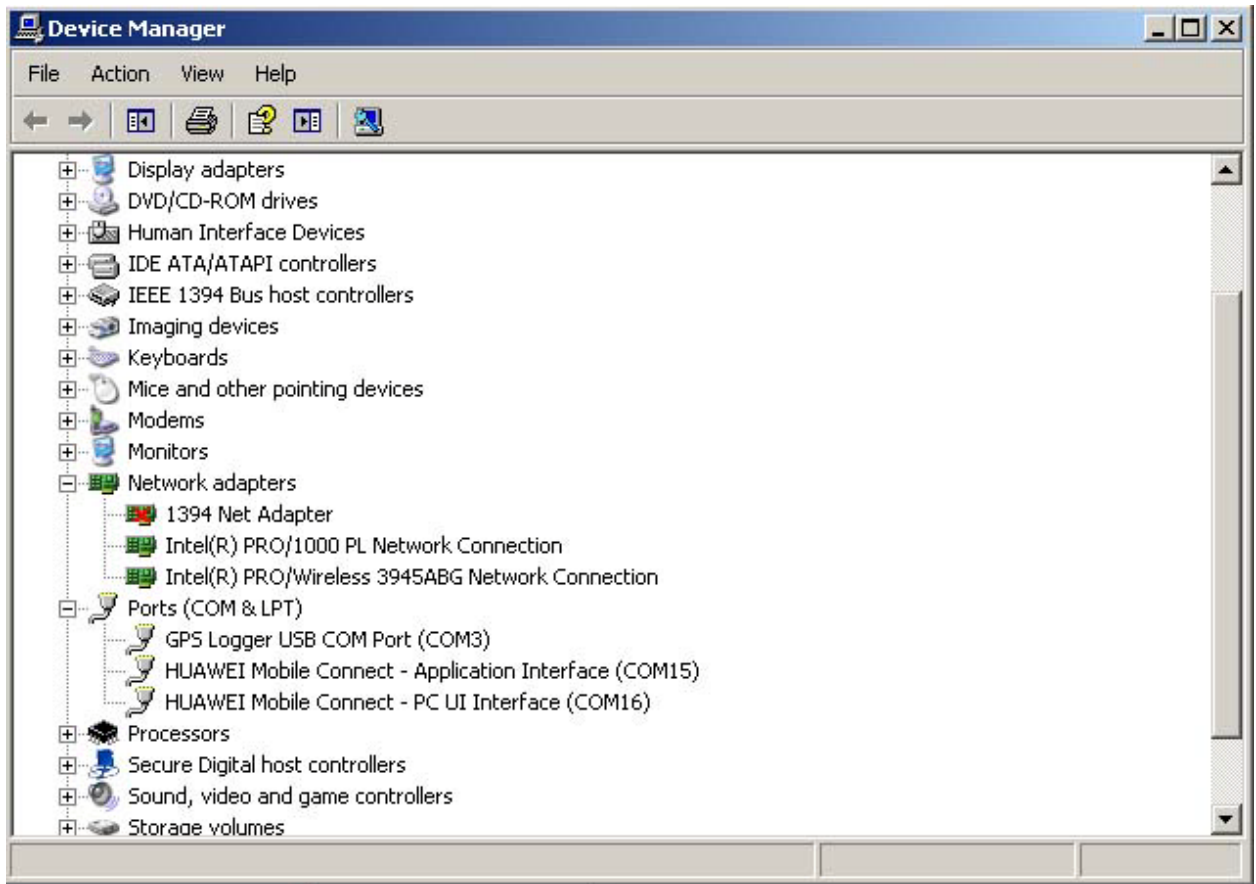


1. Go to **Control Panel -> System**
2. Open **Hardware Tab**

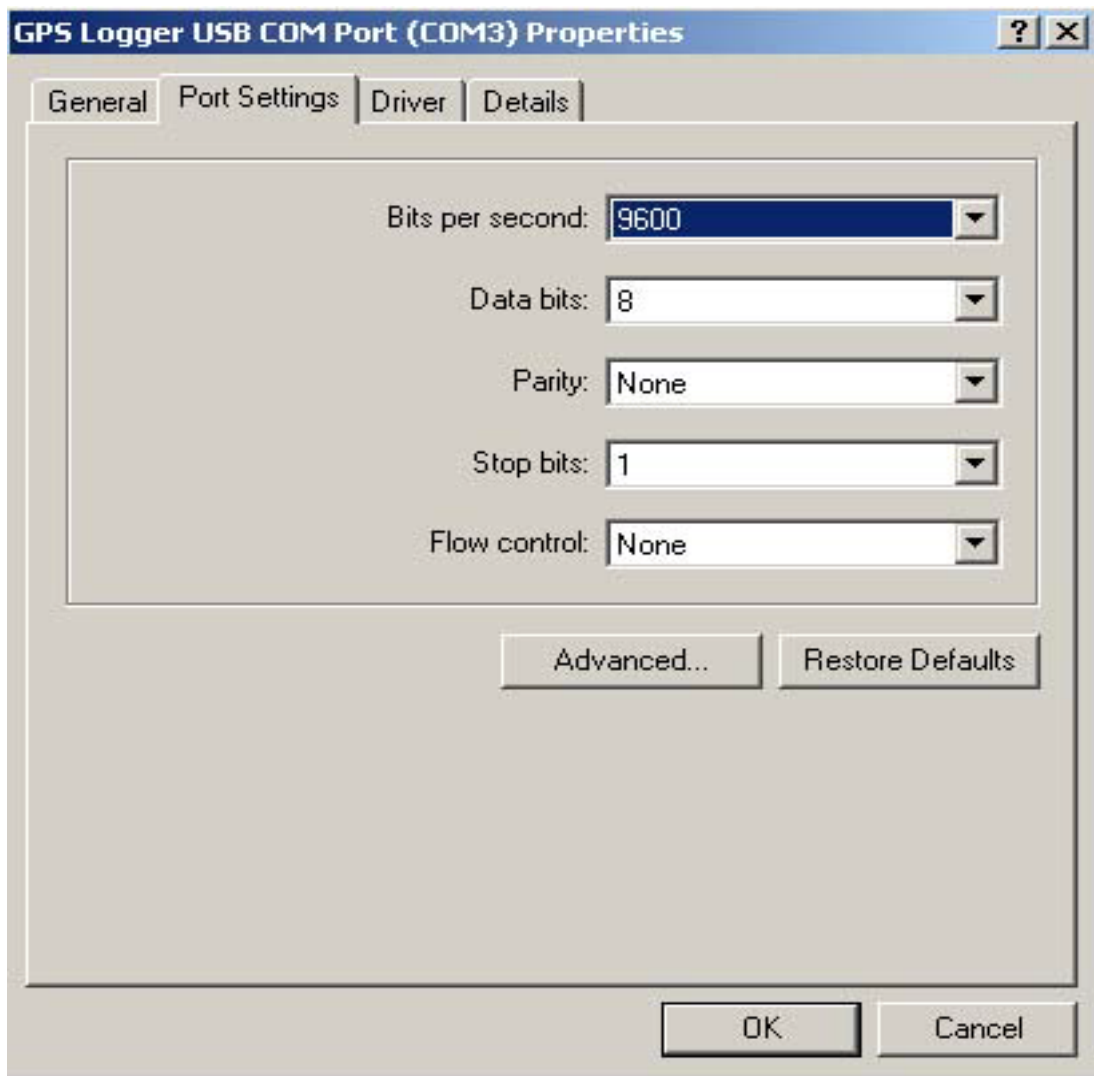


3. Click on **Device Manager** Button from **System Property**. You will get following screen:-

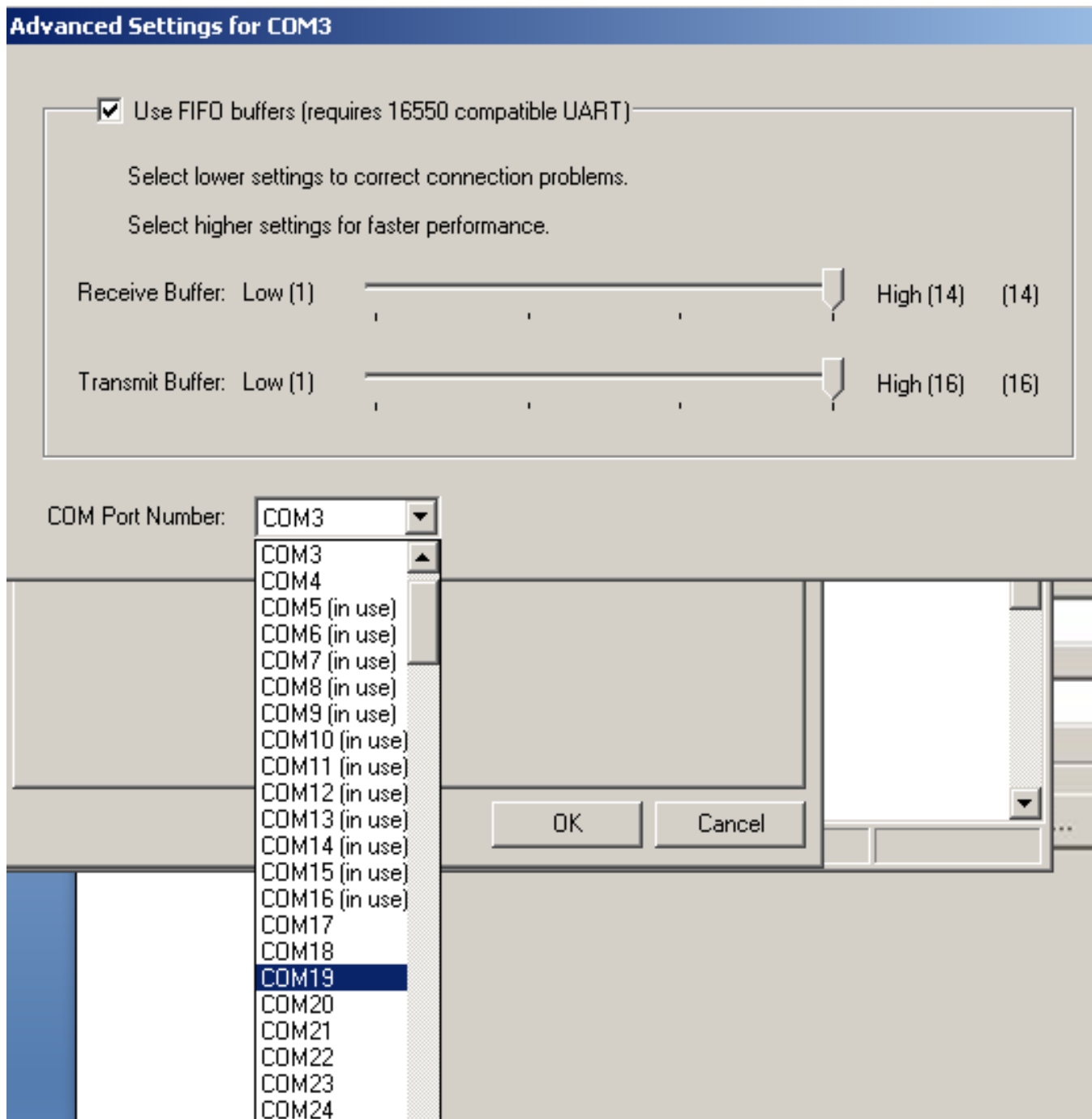


4. You should see **GPS Logger USB COM Port (COMxx)** Under Port (COM & LPT). If it is not shown, please connect the iTrail GPS logger to USB port.

5. Double click on **GPS Logger USB COM Port (COMxx)**. You will see following screen:-



6. Click on **Advance...** button. Advance setting screen should be open.
7. Change the COM Port Number by any unused Port Number available in COM Port list.



8. Remove Logger from USB port, and try again to download data.